



X-TREME LIGHT

X-TREME LIGHT



video on Youtube

X-TREME LIGHT 700

X-TREME LIGHT 1000

Characteristics

Widest format of substrate (accepted - edges taped)

Thickest substrate

Shortest strip of tape

Longest strip of tape (*can order longer)

Maximum number of consecutive tape strips ("spots") per sheet (*can order more)

Minimum distance between consecutive tape strips

Minimum distance between parallel tape strips (with 2 applicators side-by-side)

Structure

Speed

Maximum number of tape applicators

Standard tape applicator (tape width) 25mm

Optional tape applicator (tape width) 50mm

Optional tape applicator (tape width) 100mm

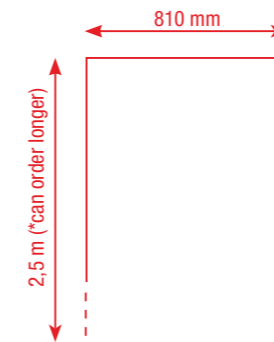
X-TREME LIGHT 700 AND X-TREME LIGHT 1000



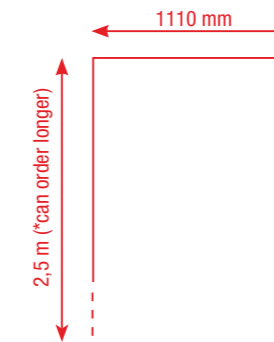
Small/medium formats - two models for formats up to 700mm (28") or 1000mm (40") wide up to 10mm (3/8") thick: 2 to 4 25mm (1") or 50mm (2") tape applicators independently programmed on a touchscreen applying multiple differently-configured strips in one pass.

Apply tapes at speeds up to 35m (115')/min

Print, point of sale, packaging, plastics, signage applications.



X-TREME LIGHT 700



X-TREME LIGHT 1000

810mm (31.9") - 730mm (28.7")

10mm (just over 3/8")

25mm (1")

2,5m (8')

4

25mm (1")

47mm (1.85")

Desktop + optional tables

10m (33')/min - 35m (115')/min

3

3mm (0.12") - 25mm (1")

3mm (0.12") - 50mm (2")

3mm (0.12") - 100mm (3.9")

1110mm (43.7") - 1000mm (40")

10mm (just over 3/8")

25mm (1")

2,5m (8')

4

25mm (1")

47mm (1.85")

Desktop + optional tables

10m (33')/min - 35m (115')/min

4

3mm (0.12") - 25mm (1")

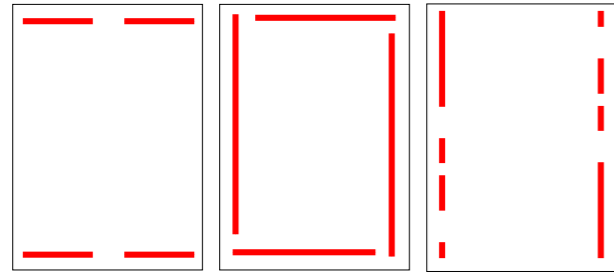
3mm (0.12") - 50mm (2")

3mm (0.12") - 100mm (3.9")

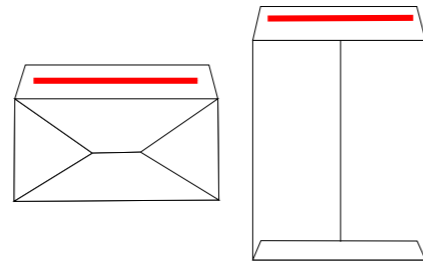
APPLICATION PATTERNS

Our standard machines are used for various product formats: posters, envelopes, pocket folders, packaging, wobblers and free-standing display units. Applying tape on one side, both sides, and all the way around the

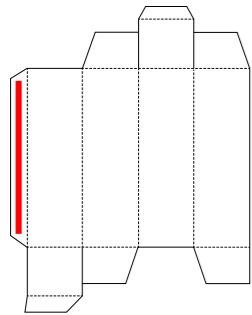
product but also applying several shorter consecutive strips (so-called "spots" of tape), putting the right amount of tape where it's needed.



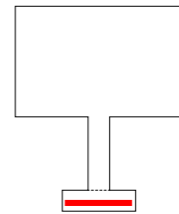
Posters



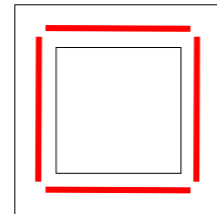
Envelopes



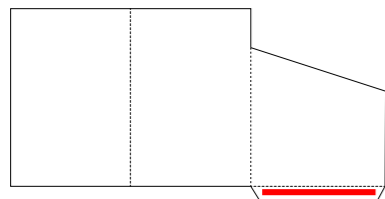
Packaging



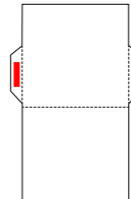
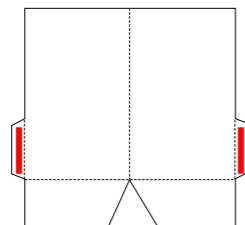
Wobblers



Box windows



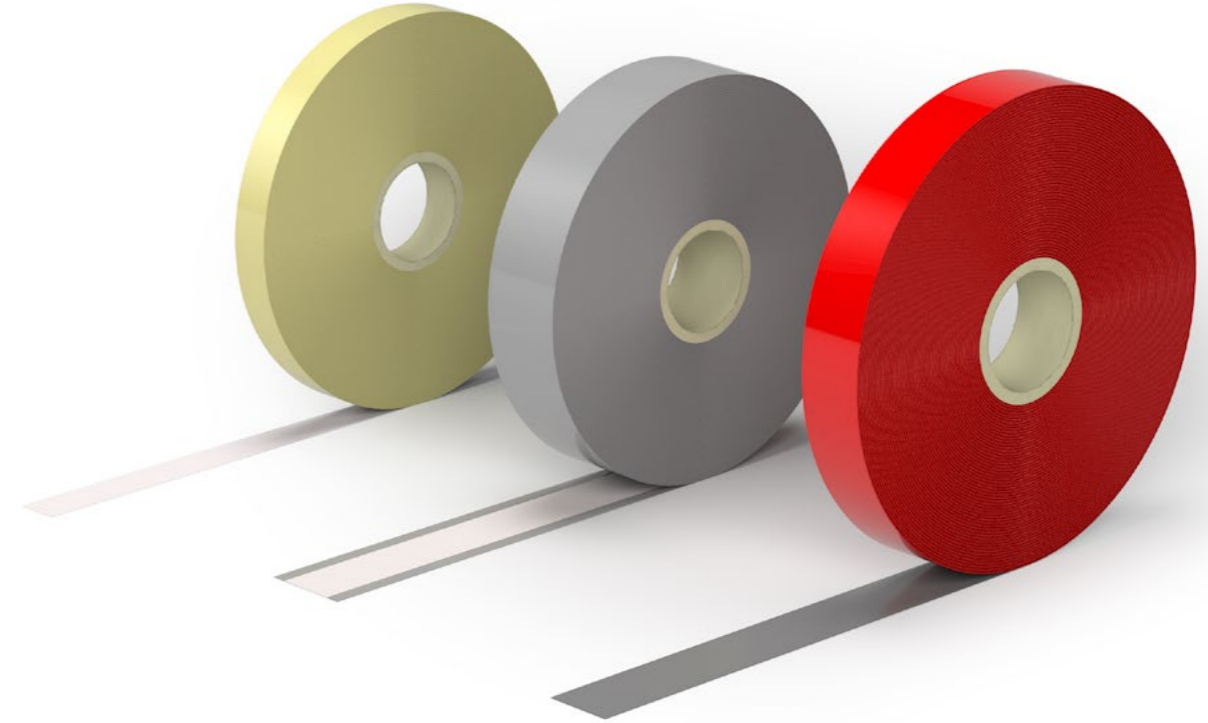
Folders



APPLICABLE TAPES

Some tapes are easier to automate than others, but whether your project requires applying a mono-sided masking tape, a transfer tape, a double-sided modified acrylic adhesive with PET carrier and paper liner, a double-sided polyethylene foam tape with modified acrylate adhesive and paper liner, or a double-sided

tackified acrylic adhesive with PET carrier and a red MOPP-film liner or many others, our applicators are designed to apply many types of tape, including extended liner (aka fingerlift) tapes, and we are continuing to expand our capabilities.



FUNCTIONALITY



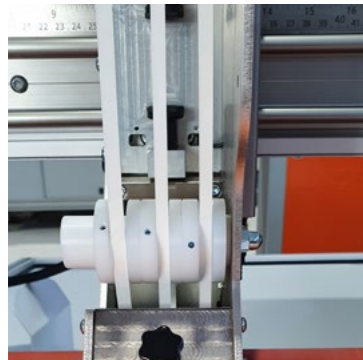
Precise micrometric adjustment of the applicator beam height accommodating substrates up to 10mm thick



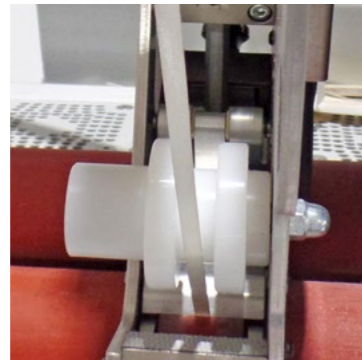
Laser-assisted applicator guidance to quickly position them where tape is required



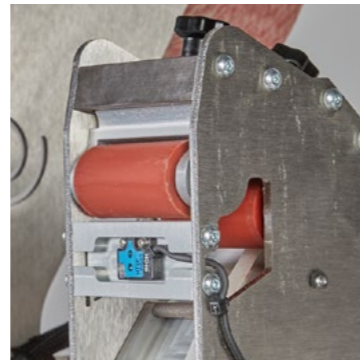
Multi-job software capable of saving machine settings for up to 100 jobs



Ability to apply more than one roll of tape on the same applicator for close parallel tape strips



Ability to apply tape strips starting at 3mm wide



The photocell “sees” many types of substrate material: black, transparent, reflective.. and allows easy placing of tape around die-cut holes

ACCESSORIES



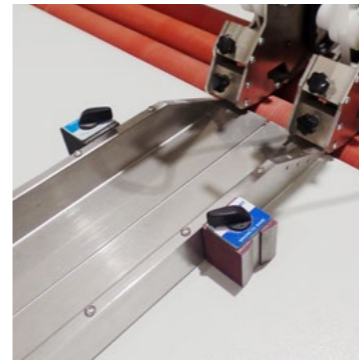
Movable support table to easily position the machine where needed



Unloading slide with alignment guides for orderly collection of processed jobs



Feeder with its own support on wheels for the automatic insertion of the sheets to be processed



Magnetic feeding guides for quick and accurate substrate alignment





Tape Application Made Easy



Dr. Shufani GmbH & Co.KG
Tape Converting Machines
Akazienstr. 7
16356 Werneuchen OT
Seefeld

+49 (0)33398 254010
www.shufani.de